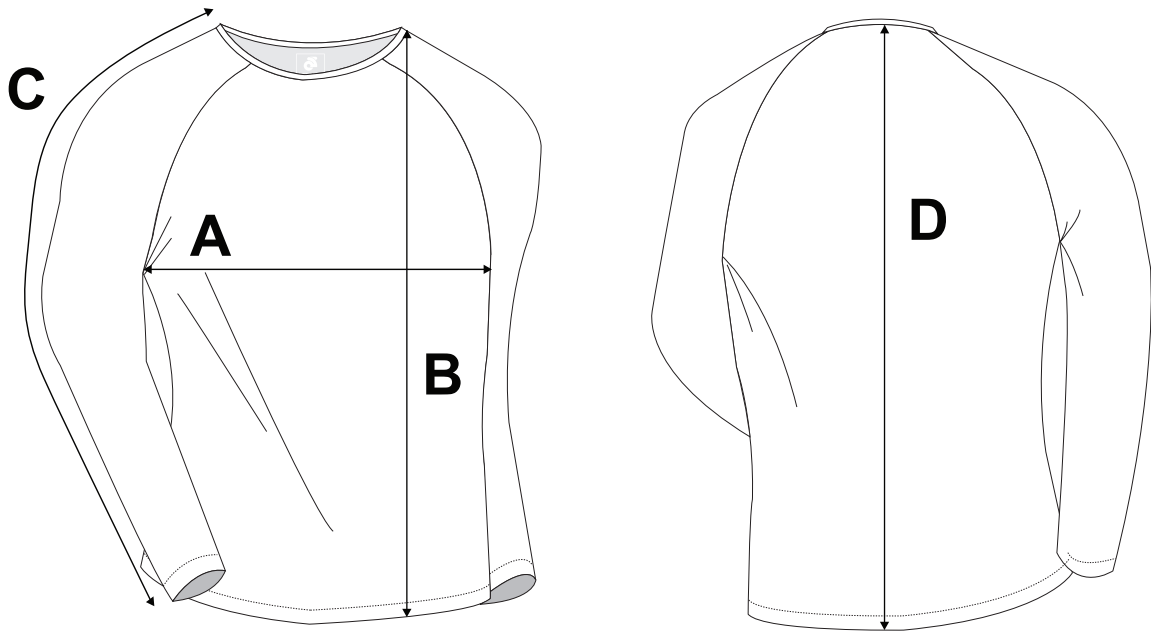


If you're unsure which size to buy, try measuring a baselayer that you already own that fits you well, and compare those measurements to the size chart. Lay the baselayer on a flat surface and use the above guide to measure the baselayer.

**Note: All measurements are approximate.**

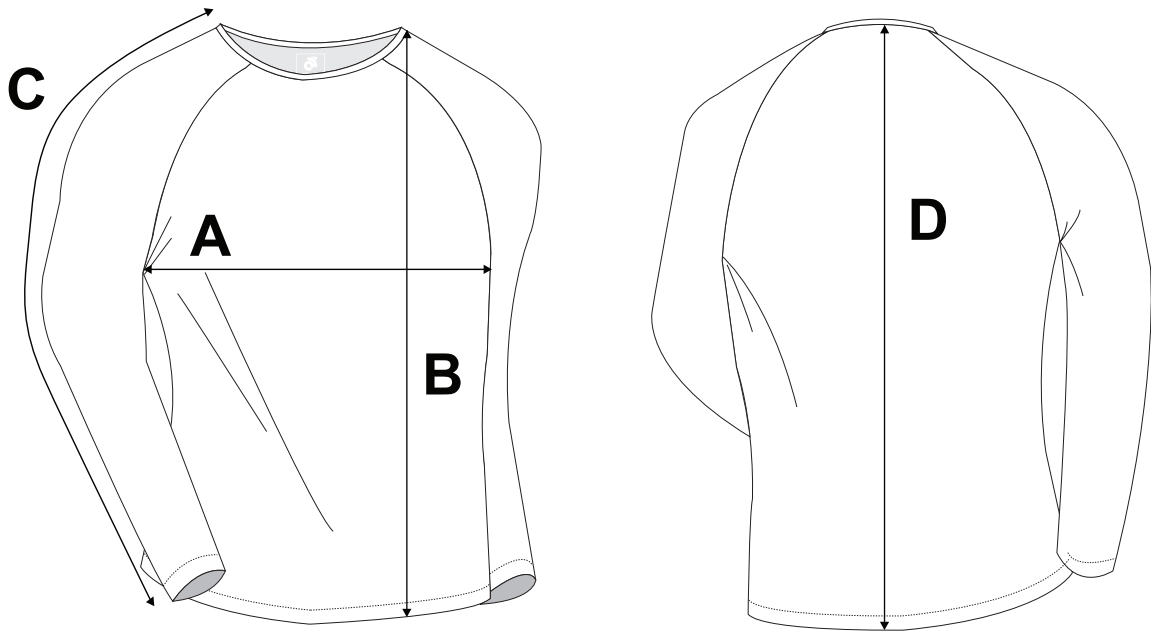
<b>Size</b>	<b>A (Chest)</b>	<b>B (Front Length)</b>	<b>C (Sleeve Length)</b>	<b>D (Back Length)</b>
<b>XS</b>	<b>15"</b>	<b>22 3/4"</b>	<b>27 1/4"</b>	<b>26 1/4"</b>
<b>S</b>	<b>16"</b>	<b>23 1/2"</b>	<b>28 1/8"</b>	<b>27"</b>
<b>M</b>	<b>17"</b>	<b>24 1/4"</b>	<b>29"</b>	<b>27 3/4"</b>
<b>L</b>	<b>18"</b>	<b>25"</b>	<b>29 7/8"</b>	<b>28 1/2"</b>
<b>XL</b>	<b>19"</b>	<b>25 3/4"</b>	<b>30 3/4"</b>	<b>29 1/4"</b>
<b>2XL</b>	<b>20 1/2"</b>	<b>26 1/2"</b>	<b>31 5/8"</b>	<b>30"</b>
<b>3XL</b>	<b>22"</b>	<b>27 1/4"</b>	<b>32 1/2"</b>	<b>30 3/4"</b>
<b>4XL</b>	<b>23 1/2"</b>	<b>28"</b>	<b>33 3/8"</b>	<b>31 1/2"</b>



If you're unsure which size to buy, try measuring a baselayer that you already own that fits you well, and compare those measurements to the size chart. Lay the baselayer on a flat surface and use the above guide to measure the baselayer.

**Note: All measurements are approximate.**

<b>Size</b>	<b>A (Chest)</b>	<b>B (Front Length)</b>	<b>C (Sleeve Length)</b>	<b>D (Back Length)</b>
<b>XS</b>	<b>14"</b>	<b>22"</b>	<b>26 1/4"</b>	<b>25 1/2"</b>
<b>S</b>	<b>15"</b>	<b>22 3/4"</b>	<b>27 1/8"</b>	<b>26 1/4"</b>
<b>M</b>	<b>16"</b>	<b>23 1/2"</b>	<b>28"</b>	<b>27"</b>
<b>L</b>	<b>17"</b>	<b>24 1/4"</b>	<b>28 7/8"</b>	<b>27 3/4"</b>
<b>XL</b>	<b>18"</b>	<b>25"</b>	<b>29 3/4"</b>	<b>28 1/2"</b>
<b>2XL</b>	<b>19 1/2"</b>	<b>25 3/4"</b>	<b>30 5/8"</b>	<b>29 1/4"</b>
<b>3XL</b>	<b>21"</b>	<b>26 1/2"</b>	<b>31 1/2"</b>	<b>30"</b>
<b>4XL</b>	<b>22 1/2"</b>	<b>27 1/4"</b>	<b>32 3/8"</b>	<b>30 3/4"</b>



If you're unsure which size to buy, try measuring a baselayer that you already own that fits you well, and compare those measurements to the size chart. Lay the baselayer on a flat surface and use the above guide to measure the baselayer.

**Note: All measurements are approximate.**

<b>Size</b>	<b>A (Chest)</b>	<b>B (Front Length)</b>	<b>C (Sleeve Length)</b>	<b>D (Back Length)</b>
JR-XS/TP 7-8	12"	19"	23 1/4"	22 1/4"
JR-S/P 9-10	13"	20"	24 1/8"	23 1/8"
JR-M 11-12	14"	21"	25"	24"
JR-L/G 13-14	15 1/4"	22 1/2"	26 3/8"	25 3/8"
JR-XL/TG 15-16	16 1/2"	24"	27 3/4"	26 3/4"